

Unit 64 1 Shelly Hall Drive, Hamilton Parish CR 01



Location and General Description

The property is in the center of the Shelly Hall Condo Development, located on Shelly Hall Drive of Radnor Road, Hamilton Parish. Amenities in the development include access to multiple swimming pools and tennis court. The development is kept to a good standard and the exterior of the residential blocks appear to be in good condition. Amenities in the vicinity include a grocery and pizza store, gas station, laundromat and Shelly Bay Beach and park.

Property Details:

The property is a split level townhouse comprised of:

Top Level - kitchen, living/dining room

Lower Level - 3 bedrooms, 2 bathrooms storage, closet and laundry room.

Assessment Number: 081005814
ARV: \$34,800
Zoning: Residential 1
Listing Price: \$625,000

The Internal Living Space is 1,126.23 sq. ft.

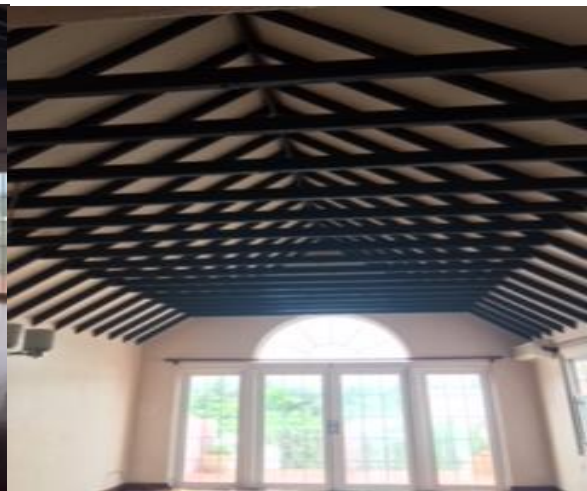
Room	Dimensions	Net Internal Area (Sq. Ft)
Living Room	20'10" x 14'9"	307.24
Kitchen	8'11" x 15'5"	137.35
Bedroom 1	11'3" x 12'4"	138.71
Bedroom 2	12' x 10'7"	126.99
Bath 1	5' x 7'10", 2'10" x 3'	47.64
Master Bedroom	13'5" x 15'1", 8'1" x 6'2"	252
Master Bathroom	5' x 11'6"	57.5
Hallway	10'9" x 3'	32.25
Hallway Closet	7'1" x 3'9"	26.55



Entrance to main house



Living/dining room facing upper porch entrance



Kitchen



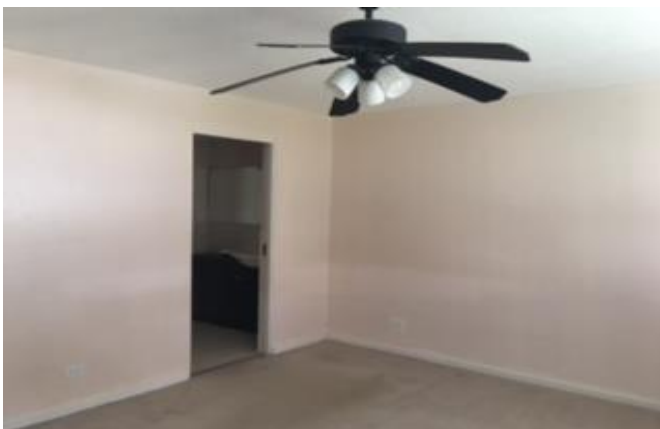
Living/dining room facing kitchen entrance



Stairway from entrance of house to lower rooms



Master Bedroom / Closet



Master Bedroom facing Bathroom



Master Bathroom



Hallway to Bedroom 2



Washer & Dryer

