



Roof
Murray Apts., 5 Redcoat Lane, St. George's
Site #: 1017000

1. Quotations are invited for the above painting project for the Bermuda Housing Corporation.
2. Contractors are instructed to carefully read and quote only on the attached Scope of Works.
3. Quotations must be returned to the offices of the Bermuda Housing Corporation via email to: tenders@bhc.bm
4. All quotations must reach the offices of the Bermuda Housing Corporation no later than **4:00 p.m. on Friday 8 August. Quotations are to be valid for three (3) months.**
5. The successful Tenderer may be notified to commence work within 7 working days of notification.
6. The Bermuda Housing Corporation is not obligated to accept the lowest or any of the bids received.

Yours faithfully,


Vicki A. Robinson
Property Officer

for **The Bermuda Housing Corporation**





SCOPE OF WORKS

**Exterior Painting & Roof
Murray Apts., 5 Redcoat Lane, St. George's
Site #: 1017000**

Please provide a quotation for labor to make the below repairs. BHC will supply all paint, bleach and bond contractors are expected to supply all tools, equipment, pressure washers and sundries.

All sub roofs, utility rooms, bike shed, and porch coverings are to be included.

4. ROOF –

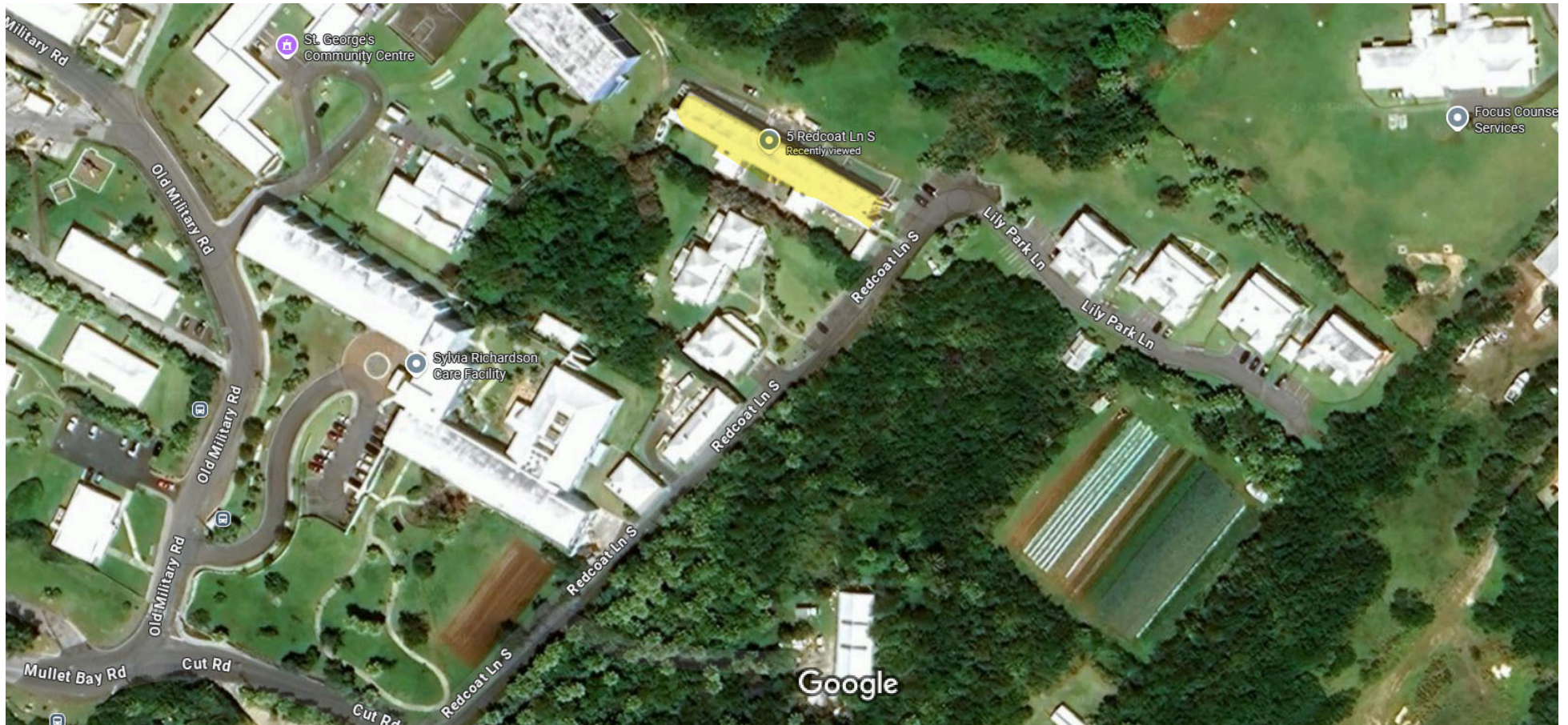
- a. To prepare all rood surfaces to be cleaned and coated, including inflatable pineapples to block all piping as needed. Tank tops must be protected prior to starting to stop any seepage into the tank water.
- b. Clean with bleach - clean roof to receive crack sealant/paint as per Manufactures specifications, pressure washing is not advised on this roof
- c. To make all repairs as needed to the roof area of a building prior to painting.
- d. Apply one (1) of SKB basecoat and two (2) coats of SKB topcoat for a total of three (3) coats, this has been converted to the elastomeric system roof paint,
- e. To wash film from all SKB (elastomeric) roof finishes prior to unblocking rainwater leaders

ALL SAFETY PRECAUTIONS ARE TO BE OBSERVED FOR HEIGHT PER THE DEPARTMENT OF HEALTH AND SAFETY AND TASK FORCE DEVELOPMENT – I.E., USEAGE OF SAFETY HARNESSSES ETC. SPECIAL CARE AND ATTENTION TO BE GIVEN TO COVER ALL HEDGING AND TENANTS BELONGINGS AS NEEDED. TO CLEAN, TIDY AND REMOVE ALL DEBRIS FROM SITE.





Murray Apts



Map data ©2025, Map data ©2025 20 m